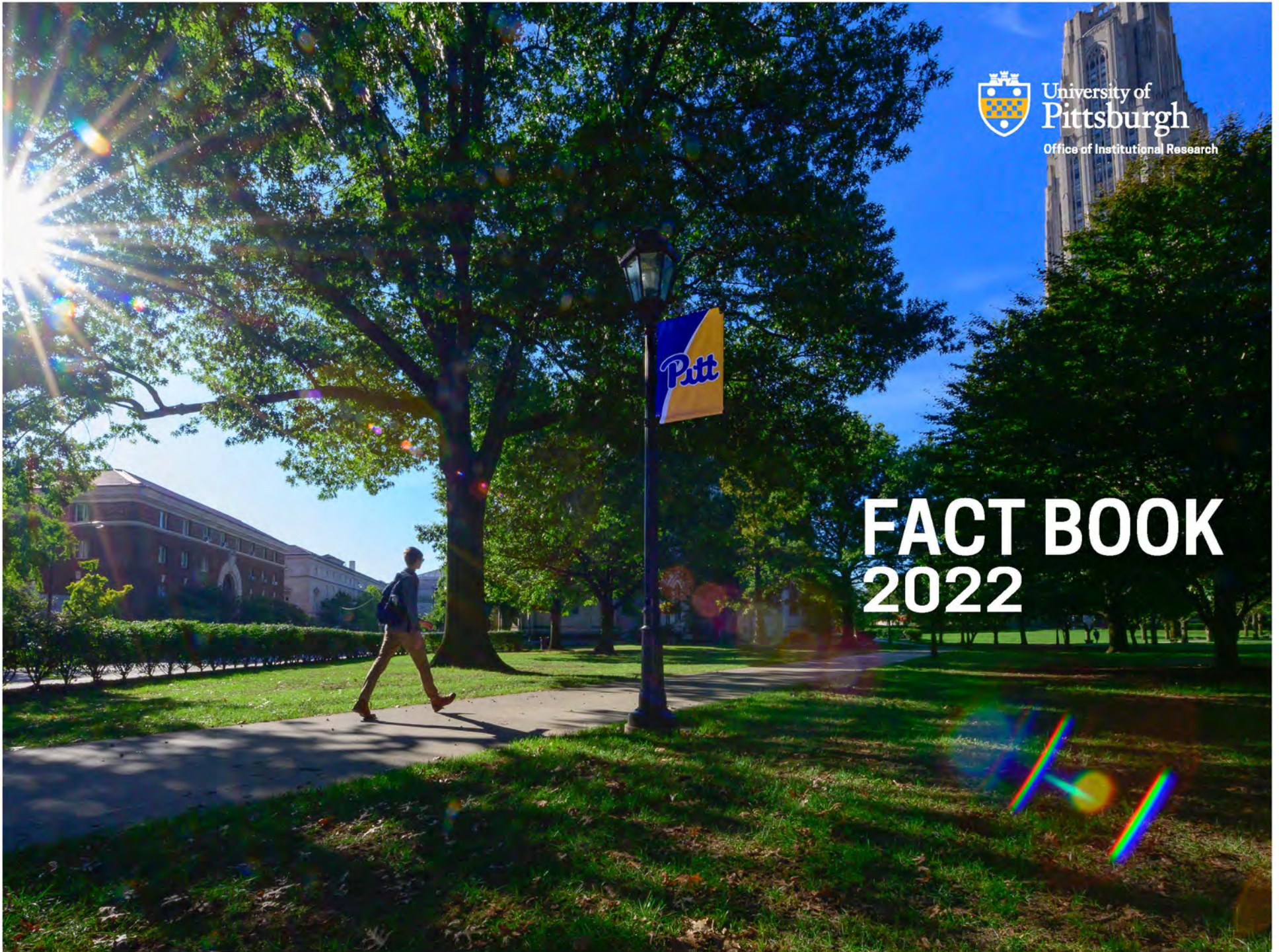




University of  
Pittsburgh

Office of Institutional Research

# FACT BOOK 2022



## Foreword

The Office of Institutional Research is pleased to present the University of Pittsburgh Fact Book 2022. This annually produced book is intended to be a useful source of information about the University of Pittsburgh. The information provided on these pages reflects much of what Institutional Research reports on behalf of the University, throughout the year. The Fact Book includes the most current information available for either an academic or fiscal year, as well as historical information. Most of the information included in the Fact Book is compiled by Institutional Research from data sources developed by the office to respond to the planning, budgeting, and governmental compliance requirements of the University. If the source of the data presented is different from Institutional Research, the office providing this information is cited. In regards to these offices, Institutional Research is grateful for the assistance that they have provided.

We hope that you find the Fact Book useful and informative. We encourage your comments and suggestions on how to improve future editions.

## GENERAL INFORMATION



## MISSION STATEMENT

The University of Pittsburgh, founded in 1787, is one of the oldest institutions of higher education in the United States. As one of the nation's distinguished comprehensive universities, the resources of the University constitute an invaluable asset for the intellectual, economic, and social enrichment of Pennsylvania, while the international prestige of the University enhances the image of Pennsylvania throughout the world.

The University's mission is to:

- provide high-quality undergraduate programs in the arts and sciences and professional fields, with emphasis upon those of special benefit to the citizens of Pennsylvania;
- offer superior graduate programs in the arts and sciences and the professions that respond to the needs of Pennsylvania, as well as to the broader needs of the nation and the world;
- engage in research, artistic, and scholarly activities that advance learning through the extension of the frontiers of knowledge and creative endeavor;
- cooperate with industrial and governmental institutions to transfer knowledge in science, technology, and health care;
- offer continuing education programs adapted to the personal enrichment, professional upgrading, and career advancement interests and needs of adult Pennsylvanians; and
- make available to local communities and public agencies the expertise of the University in ways that are consistent with the primary teaching and research functions and contribute to social, intellectual, and economic development in the Commonwealth, the nation, and the world.

The trustees, faculty, staff, students, and administration of the University are dedicated to accomplishing this mission, to which they pledge their individual and collective efforts, determined that the University shall continue to be counted among the prominent institutions of higher education throughout the world.

Source: Office of the Secretary, approved by the University of Pittsburgh Board of Trustees, February 1995.

## GUIDE TO FACT BOOK DEFINITIONS

For the most part, universities share in the terminology used to describe enrollment, employment, and indeed, all other facets of a university's activities. However, there are nuances that are peculiar to each. The definitions that are presented here reflect the taxonomy used by the University of Pittsburgh, and as such are referenced here in the *Fact Book*.

---

### **Academic Rank**

A categorization which includes: Professor, Associate Professor, Assistant Professor, Instructor, Lecturer, and Other, with that last category used for faculty who are Librarians, Scholars, and Teachers.

### **Academic Year**

This is the year that begins on September 1 and then ends on August 31. Comprising this twelve-month period is the Fall Term, which runs from late August to December; the Spring Term, which runs from January to April; and the Summer Term, which runs from May to August. Summer Sessions run concurrently with the Summer Term.

### **Campus**

This is one of the five geographic locations of the University of Pittsburgh. In addition to the Pittsburgh Campus, the regional campuses of the University are located in: Johnstown, Greensburg, Titusville, and Bradford.

### **Certificate Category**

Certificate programs are categorized respective to the academic level of the program. As such, they are referred to either as an Undergraduate Certificate or as a Graduate Certificate.

### **Certificate Program**

An academic program whose completion is recognized by conferring upon the student an award referred to as a certificate.

### **College In High School**

A program in which high school students are enrolled in classes at the University of Pittsburgh but receive instruction at their high school.

### **Cooperative Education Program**

A program in which students from other colleges and universities may cross-register for classes at the University of Pittsburgh.

### **Degree Category**

A degree classification which includes: Associate, Baccalaureate, Master's, Doctorate-Research/Scholarship, and Doctorate-Professional Practice.

### **Degree Program**

An academic program whose completion is recognized by conferring upon the student an award referred to as a degree.

### **Degree Type**

A specific degree within a degree category, for example: BA, MA, PhD, MD, and so on.

### **Fiscal Year**

The year begins on July 1 and then ends on June 30.

### **Full-Time Equivalent (FTE) Enrollment**

A calculated number derived by adding the number of full-time students to 40 percent of the number of part-time students.

## GUIDE TO FACT BOOK DEFINITIONS (continued)

**Instructional Faculty**

University faculty associated with teaching activities, as defined by the American Association of University Professors.

**Level*****Graduate Students***

Those students enrolled in programs leading to a graduate degree or certificate. Also included are those students who are enrolled for graduate coursework but who are not seeking a graduate degree or certificate.

**Doctoral students are enrolled in programs that are classified as follows:**

***Doctorate-Professional Practice***

These degree programs are the professional degree programs of the School of Medicine (MD), the School of Dental Medicine (DMD), the School of Pharmacy (PharmD), the School of Law (JD), the School of Nursing (DNP), the School of Health and Rehabilitation Sciences (AUD, DPT, CSCD, OTD), and the School of Education (EdD).

***Doctorate-Research/Scholarship***

Degree programs in this classification are all doctoral degree programs other than those identified as Doctorate-Professional Practice.

***Undergraduate Students***

Those students enrolled in programs leading to an undergraduate degree or certificate. Also included are students enrolled for undergraduate coursework but who are not seeking an undergraduate degree or certificate.

**Postdoctoral Associate**

This is a transitional position and is viewed as preparatory for an academic and or research career. Individuals in this classification are considered employees of the University.

**Postdoctoral Scholar**

This is a transitional position and is viewed as preparatory for an academic and or research career. Individuals in this position are paid from a University grant that prohibits the individual from being considered an employee, or are paid from a grant whose funding source does not permit collection of a fringe rate, or are being paid a stipend by an agency outside the University.

**Race*****For Faculty and Staff***

The U.S. Department of Labor classification wherein an individual's race is reported in terms of the following: Black or African American, American Indian or Alaskan Native, Asian, Native Hawaiian or Other Pacific Islander, Hispanic or Latino, White, and Two or More Races.

***For Students***

The U. S. Department of Education's classification taxonomy wherein an individual's race is reported in terms of the following: International, Black or African American, American Indian or Alaskan Native, Asian, Native Hawaiian or Other Pacific Islander, Hispanic or Latino, White, and Two or More Races.

**Research Associate**

This is an appointment that involves substantially full-time research or scholarship, is renewable, and is not viewed as preparation for another position. These Individuals are considered employees of the University.

## GUIDE TO FACT BOOK DEFINITIONS (continued)

**School**

This is an academic unit that is responsible for the administration of the institution's academic programs.

**Status*****Full-time students***

Undergraduate students registered for 12 or more credits in a term. Graduate students and first professional students registered for 9 or more credits in a term.

***Part-time students***

Undergraduate students registered for fewer than 12 credits in a term. Graduate students and first professional students registered for fewer than 9 credits in a term.

**Tenure**

A status accorded to those members of the University's faculty who have demonstrated high ability and achievement in their dedication to the growth of human knowledge.

## SPECIALIZED ACCREDITATIONS BY SCHOOL, PROGRAM, AND ACCREDITING AGENCY

The University of Pittsburgh is accredited by the Middle States Commission on Higher Education. The following table lists specialized accreditations by school and program.

Program	Accrediting Agency	Last Evaluation Review	Next Scheduled Evaluation Review	Accredited Until
<b>Graduate School of Public and International Affairs</b>				
Master's degree programs in: International Development; Public Administration; and, Public and International Affairs	Network of Schools of Public Policy, Affairs, and Administration, The Commission on Peer Review and Accreditation	2015	2021/2022	2021/2022
<b>Graduate School of Public Health</b>				
All Master's and Doctoral degree programs	Council on Education for Public Health	2016	2023	2023
Masters of Health Administration	Commission on Accreditation of Healthcare Management Education	2021	2028	2028
Master's Program in Genetic Counseling	Accreditation Council for Genetic Counseling	2019	2027	2027
<b>Joseph M. Katz Graduate School of Business and College of Business Administration</b>				
Undergraduate, Master's and Doctoral degree programs in Business	The Association to Advance Collegiate Schools of Business	2018	2022/2023	2023
<b>Kenneth P. Dietrich School of Arts and Sciences</b>				
Baccalaureate in Chemistry	American Chemical Society	2015	2021	2022
Doctoral Program in Clinical Psychology	American Psychological Association Committee on Accreditation	2015	2023	2023
	Psychological Clinical Science Accreditation System	2013	2023	2023
Baccalaureate, Masters and Doctoral degree programs in Theater Arts	National Association of Schools of Theatre (NAST)	2016/2017	2026/2027	2027
English Language Institute	Commission on English Language Accreditation	2016/2017	2026/2027	2027
<b>School of Dental Medicine</b>				
DMD	American Dental Association, Commission on Dental Association	2017	2024	2025
Dental Hygiene	American Dental Association, Commission on Dental Association	2017	2024	2025



## SPECIALIZED ACCREDITATIONS BY SCHOOL, PROGRAM, AND ACCREDITING AGENCY

School of Dental Medicine (continued)				
Advanced Education in General Dentistry	American Dental Association, Commission on Dental Association (CODA)	2017	The School of Dental Medicine submitted a letter to CODA that effective January 1, 2019, the Advanced Education in General Dentistry Program will be discontinued. The program is no longer enrolling students. All students who were enrolled completed their program in 2018.	N/A
Endodontics	American Dental Association, Commission on Dental Association	2017	2024	2025
Orthodontics and Dentofacial Orthopedics	American Dental Association, Commission on Dental Association	2017	2024	2025
Pediatric Dentistry	American Dental Association, Commission on Dental Association	2017	2024	2025
Periodontics	American Dental Association, Commission on Dental Association	2017	2024	2025
Prosthodontics	American Dental Association, Commission on Dental Association	2017	2024	2025
Dental Anesthesiology	American Dental Association, Commission on Dental Association	2015	2022	2023
General Practice Residency	American Dental Association, Commission on Dental Association	2015	2022	2023
Oral and Maxillofacial Pathology	American Dental Association, Commission on Dental Association	2018	2025	2025
Oral and Maxillofacial Surgery	American Dental Association, Commission on Dental Association	2016	2021	2022
School of Computing and Information				
Masters degree program in Library and Information Science	American Library Association, Committee on Accreditation	2021	2028	2028
School of Education				
Teacher Certification Program in: Teacher of the Visually Impaired	Association for Education and Rehabilitation of the Blind and Visually Impaired	2018	2023	2023
Teacher certification programs in: Orientation and Mobility For the Visually Impaired	Association for Education and Rehabilitation of the Blind and Visually Impaired	2017	2022	2022
Applied Behavior Analysis Program	Behavior Analyst Certification Board	2020	2021	2022

## SPECIALIZED ACCREDITATIONS BY SCHOOL, PROGRAM, AND ACCREDITING AGENCY

School of Health and Rehabilitation Sciences				
Master of Science Dietitian Nutritionist Program	Accreditation Council for Education in Nutrition and Dietetics, the Accrediting Agency for the Academy of Nutrition and Dietetics	2018	2023	2024
Baccalaureate degree program in Emergency Medicine	Commission on Accreditation of Allied Health Education Programs (CAAHEP)	2017	2023	No expiration, expected revisit 2023
Baccalaureate Degree Program in Health Information Management	Commission on Accreditation for Health Informatics and Information Management Education	2001	2022-2023	2022-2023
		Annual Program Assessment Report (APAR) is provided every year to CAHIIM. This is our most recent approval. Program: University of Pittsburgh Reporting Period: 8/1/2019 - 7/31/2020 Submitted On: 3/22/2021 Approved On: 10/13/2021		
Master of Science Degree Program in Health Information Management	Commission on Accreditation for Health Informatics and Information Management Education	2020	2022-2023	2022-2023
		Annual Program Assessment Report is provided every year to CAHIIM. This is our most recent approval. Program: University of Pittsburgh Reporting Period: 8/1/2019 - 7/31/2020 Submitted On: 3/22/2021 Approved On: 10/8/2021		
Master of Science Degree in Clinical Rehabilitation and Mental Health Counseling	Commission on Accreditation of Counseling and Related Educational Programs (CACREP)	2015	2022	2023
Master of Science Degree Rehabilitation Science and Technology; Rehabilitation Counseling	Council of Rehabilitation Education	2015	2022	2023
Doctor of Occupational Therapy degree program	Accreditation Council for Occupational Therapy Education (ACOTE)	2019	2026/2027	2027
Doctor of Physical Therapy degree program	Commission on Accreditation in Physical Therapy Education	2020	2025	2026
Masters degree in Speech Language Pathology	Council on Academic Accreditation in Audiology and Speech Language Pathology	2018	2025	2026
AuD Degree in Audiology in Communication Science and Disorders	Council on Academic Accreditation in Audiology and Speech Language Pathology	2018	2025	2026

## SPECIALIZED ACCREDITATIONS BY SCHOOL, PROGRAM, AND ACCREDITING AGENCY

School of Health and Rehabilitation Sciences (continued)				
Master of Science in Physician Assistant Studies	Accreditation Review Commission on Education for the Physician Assistant, Inc. (ARC-PA)	2018	Self-Study due in 2025 or 2026; Validation Visit likely to occur in Fall 2027	2028
Baccalaureate degree program in Athletic Training	Commission on Accreditation of Athletic Training Education (CAATE)	2011/2012	2022/2023	2023
Master's degree program in Prosthetics and Orthotics	National Commission on Orthotics and Prosthetics Education, through the Commission on Accreditation of Allied Health Programs	2020	2025	2025
Master of Science Degree in Rehabilitation Technology	Committee on Accreditation for Rehabilitation Engineering and Assistive Technology Education (CoA-RATE), in conjunction with the Commission on Accreditation of Allied Health Education Programs (CAAHEP)	2018	2022	2022
School of Law				
Degree program in Law	American Bar Association (ABA) / Association of American Law Schools (AALS)	2018	2028	2028
School of Medicine				
First professional degree program in Medicine	Liaison Committee on Medical Education of the Council on Medical Education of the American Medical Association and the Association of American Medical Colleges	2019	2026-27	2027-28
School of Nursing				
Baccalaureate Programs - BSN and ABSN - Including programs offered at UPG and UPJ	Commission on Collegiate Nursing Education	2019	2029	2029
Master's degree programs	Commission on Collegiate Nursing Education	2019	2029	2029
Doctorate of Nursing Practice Programs	Commission on Collegiate Nursing Education	2014	2024	2024
Post Graduate Advanced Practice Registered Nursing (APRN) Certificate Program	Commission on Collegiate Nursing Education	2014	2024	2024
Doctorate degree program in Nurse Anesthesia	American Association of Nurse Anesthetists, Council on Accreditation of Nurse Anesthesia Education Programs	2020	2030	2030

## SPECIALIZED ACCREDITATIONS BY SCHOOL, PROGRAM, AND ACCREDITING AGENCY

School of Nursing (continued)				
Doctorate Degree in Nurse Midwifery	Accreditation Committee for Midwifery Education	2016	2021	2022
Continuing Education Programs	American Nurses Credentialing Center Pennsylvania State Nurses Association	2020	2025	2025
School of Pharmacy				
Doctor of Pharmacy Program	Accreditation Council for Pharmacy Education	2017	2024/2025	2025
School of Social Work				
Baccalaureate and Master's Degree Programs	Council of Social Work Education	2021	2027	2028
Swanson School of Engineering				
<b>Baccalaureate Degree Programs in:</b>				
Bioengineering	Accreditation Board for Engineering and Technology, Inc.	2017	2022	2023
Chemical Engineering	Accreditation Board for Engineering and Technology, Inc.	2017	2022	2023
Civil Engineering	Accreditation Board for Engineering and Technology, Inc.	2017	2022	2023
Computer Engineering	Accreditation Board for Engineering and Technology, Inc.	2017	2022	2023
Electrical Engineering	Accreditation Board for Engineering and Technology, Inc.	2017	2022	2023
Engineering Science	Accreditation Board for Engineering and Technology, Inc.	2017	2022	2023
Environmental Engineering	Accreditation Board for Engineering and Technology, Inc.	1st Accreditation 2017-2018	2022	2023
Industrial Engineering	Accreditation Board for Engineering and Technology, Inc.	2017	2022	2023
Materials Science and Engineering	Accreditation Board for Engineering and Technology, Inc.	2017	2022	2023
Mechanical Engineering	Accreditation Board for Engineering and Technology, Inc.	2017	2022	2023
University Counseling Center				
Doctoral Internship program in Psychology	American Psychological Association, Committee on Accreditation	2019	2029	2029

## SPECIALIZED ACCREDITATIONS BY SCHOOL, PROGRAM, AND ACCREDITING AGENCY

University of Pittsburgh at Bradford				
Associate and Baccalaureate degree programs in Nursing	Accreditation Commission for Education in Nursing	2020	2028	2028
Baccalaureate degree program in Athletic Training	Commission on Accreditation of Athletic Training Education	2011	Program has been terminated and runs through August 2022. All students who graduate with the major during that time will graduate from an accredited program.	N/A
University of Pittsburgh at Greensburg				
Baccalaureate Degree in Nursing (Accreditation covered by Pittsburgh Campus School of Nursing BSN)	Commission on Collegiate Nursing Education (CCNE)	2019	2029	2029
University of Pittsburgh at Johnstown				
Chemical Engineering	Engineering Accreditation Commission of the Accreditation Board for Engineering and Technology, Inc.	2019	2025	2026
Civil Engineering	Engineering Accreditation Commission of the Accreditation Board for Engineering and Technology, Inc.	2019	2025	2026
Computer Engineering	Engineering Accreditation Commission of the Accreditation Board for Engineering and Technology, Inc.	2019	2025	2026
Electrical Engineering	Engineering Accreditation Commission of the Accreditation Board for Engineering and Technology, Inc.	2019	2025	2026
Mechanical Engineering	Engineering Accreditation Commission of the Accreditation Board for Engineering and Technology, Inc.	2019	2025	2026
Associate degree program in Respiratory Care	Commission on Accreditation of Respiratory Care	2012	2022	2022
Associate degree program in Surgical Technology	Commission on Accreditation of Allied Health Education Programs	2019	2029	2029
Baccalaureate Degree in Nursing (Accreditation covered by Pittsburgh Campus School of Nursing BSN)	Commission on Collegiate Nursing Education (CCNE)	2019	2029	2029
Western Psychiatric Institute and Clinic/Department of Psychiatry				
Clinical Psychology Internship Training Program	American Psychological Association Committee on Accreditation	2019	2029	2029

Source: Office of the Provost, February 2022.

## MEMBER INSTITUTIONS OF THE ASSOCIATION OF AMERICAN UNIVERSITIES

See the following link for this information: <https://www.aau.edu/who-we-are/our-members>

# UNIVERSITY ORGANIZATION



**UNIVERSITY OF PITTSBURGH  
Membership of the Board of Trustees  
2021-2022**

Thomas E. Richards, Chairperson  
Mary Ellen Callahan, Vice Chairperson  
Louis R. Cestello, Vice Chairperson  
Patrick Gallagher, Chancellor and Chief Executive Officer, Member Ex Officio

**Term Trustees**

<b>2018-2022</b>	<b>2019-2023</b>	<b>2020-2024</b>	<b>2021-2025</b>
Mary Ellen Callahan	Douglas M. Browning	John A. Barbour	Sundaa Bridgett-Jones
Vaughn S. Clagette	Louis R. Cestello	Edward J. Grefenstette	Roberta A. Luxbacher
James P. Covert	David C. Chavern	Patricia D. Horoho	Thomas E. Richards
Keith E. Schaefer	Deborah J. Gillotti	John H. Pelusi Jr. Marna Cupp Whittington	Adam C. Walker

**Special Trustees**

<b>2018-2022</b>	<b>2019-2023</b>	<b>2020-2024</b>	<b>2021-2024</b>
Wen-Ta Chiu	Robert O. Agbede	John P. Gismondi	Majdi B. Abulaban
David J. Morehouse	G. Nicholas Beckwith III	Marlee S. Myers	SaLisa L. Berrien
	Thomas M. Kurtz	Arthur J. Rooney II	Hui Debra Cen
	Jeannine T. Schoenecker <sup>1</sup>		Tamara M. Haddad
			Bryan S. Salesky
			Herbert S. Shear

**Alumni Trustees**

<b>2018-2022</b>	<b>2019-2023</b>	<b>2020-2024</b>	<b>2021-2025</b>
Jane Bilewicz Allred	Michael G. Wells	Lisa A. Golden	Larry J. Merlo
Gary T. Brownlee		S. Jeffrey Kondis	

**Commonwealth Trustees**

(G - Governor appointment; H - House appointment; S - Senate appointment)

<b>2017-2021</b>	<b>2018-2022</b>	<b>2019-2023</b>	<b>2020-2024</b>
Sy Holzer (G)	John A. Maher III (H)	Jake Wheatley Jr. (G)	Bradley J. Franc (G)
Thomas VanKirk (H)	John J. Verbanac (S)	Diane P. Holder (H)	Natalie Mihalek (H)
William K. Lieberman (S)		Peter C. Varischetti (S)	Jay Costa Jr. (S)

**Ex Officio Trustees**

Tom W. Wolf, Governor of the Commonwealth of Pennsylvania  
Noe Ortega, Acting Secretary of Education of the Commonwealth of Pennsylvania  
Rich Fitzgerald, Allegheny County Executive  
William Peduto, Mayor of the City of Pittsburgh

**Emeritus Trustees**

Thomas G. Bigley	E. Jeanne Gleason	Martha Harle Munsch	Charles M. Steiner
Suzanne W. Broadhurst	J. Roger Glunt	Thomas H. O'Brien	William E. Strickland Jr.
Michael A. Bryson	Earl F. Hord	Anthony J. F. O'Reilly	John A. Swanson
John G. Conomikes	Paul E. Lego	Robert A. Paul	Burton M. Tansky
George A. Davidson Jr.	Robert G. Lovett	Robert P. Randall	Stephen R. Tritch
Catherine D. DeAngelis	George L. Miles Jr.	James C. Roddey	Thomas J. Usher
Herbert P. Douglas Jr.	Frank E. Mosier	Farrell Rubenstein	Sam S. Zacharias
D. Michael Fisher	Alfred L. Moyé	Richard P. Simmons	

Source: Office of the Secretary, September 2021.

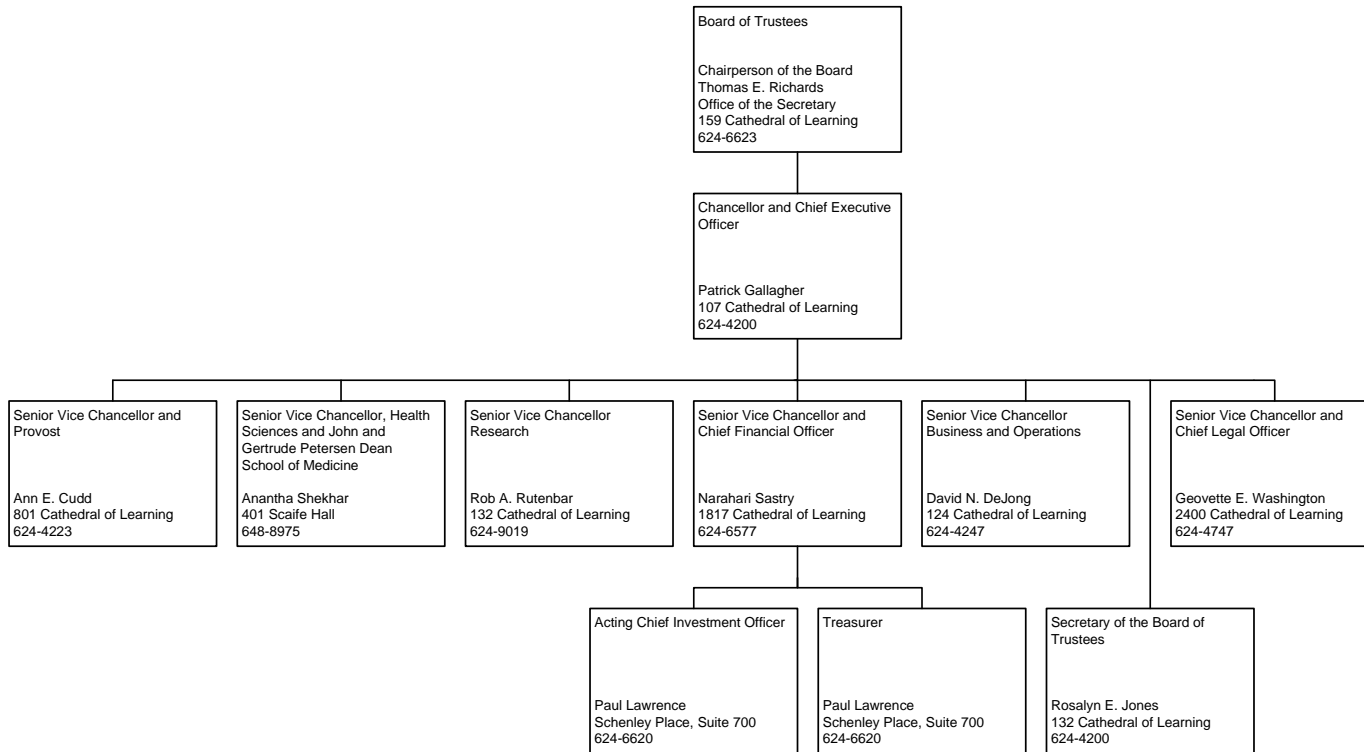


### Officers of the University of Pittsburgh 2021-2022

Thomas E. Richards .....	Chairperson of the Board of Trustees
Patrick Gallagher .....	Chancellor and Chief Executive Officer
Ann E. Cudd .....	Senior Vice Chancellor and Provost
Anantha Shekhar .....	Senior Vice Chancellor for Health Sciences and John and Gertrude Petersen Dean of the School of Medicine
Geovette E. Washington.....	Senior Vice Chancellor and Chief Legal Officer
Narahari Sastry.....	Senior Vice Chancellor and Chief Financial Officer
David N. DeJong.....	Senior Vice Chancellor for Business and Operations
Rob A. Rutenbar .....	Senior Vice Chancellor for Research
Rosalyn E. Jones.....	Vice Chancellor and Secretary of the Board of Trustees
Paul Lawrence .....	Treasurer and Interim Chief Investment Officer

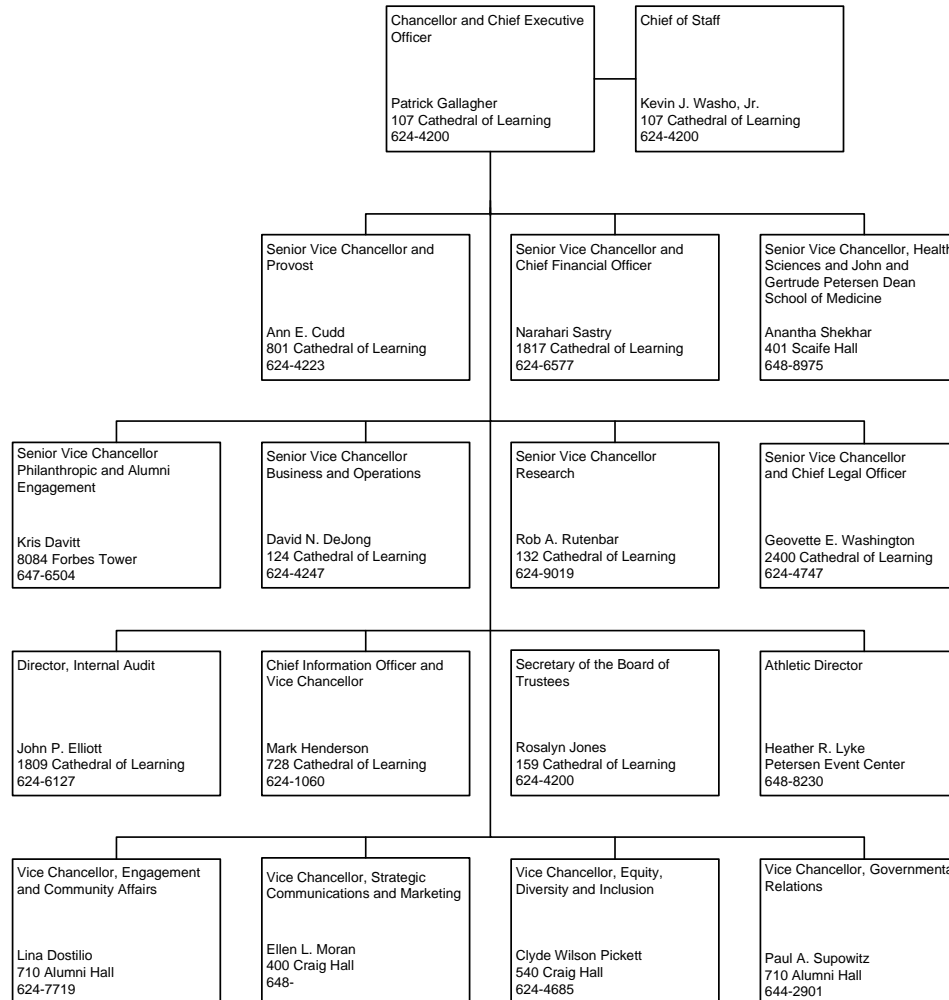
Source: Office of the Secretary, September 2021.

### UNIVERSITY OFFICERS

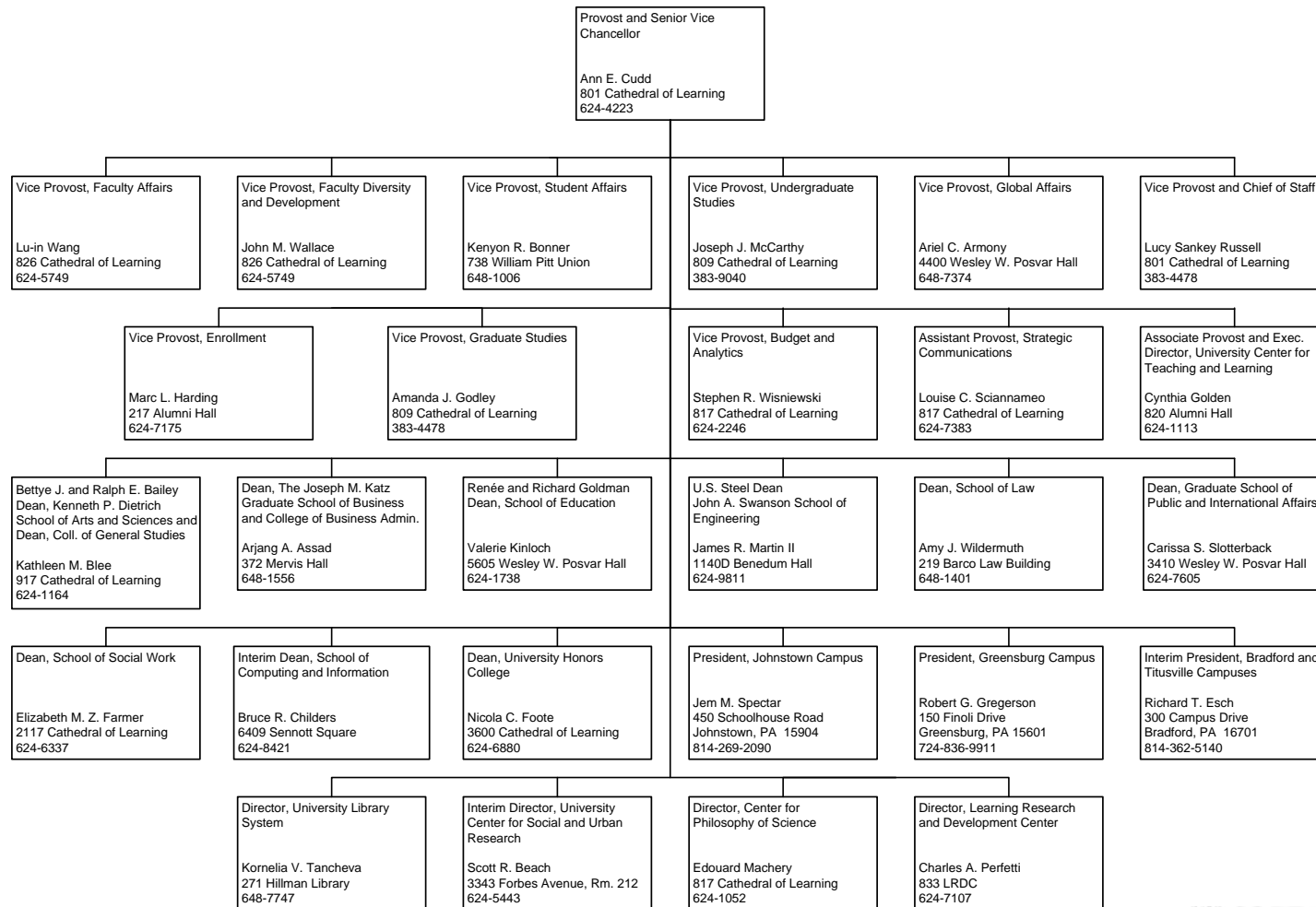


Note: All telephone numbers are in the 412 area code unless indicated otherwise.

### CHANCELLOR AND CHIEF EXECUTIVE OFFICER

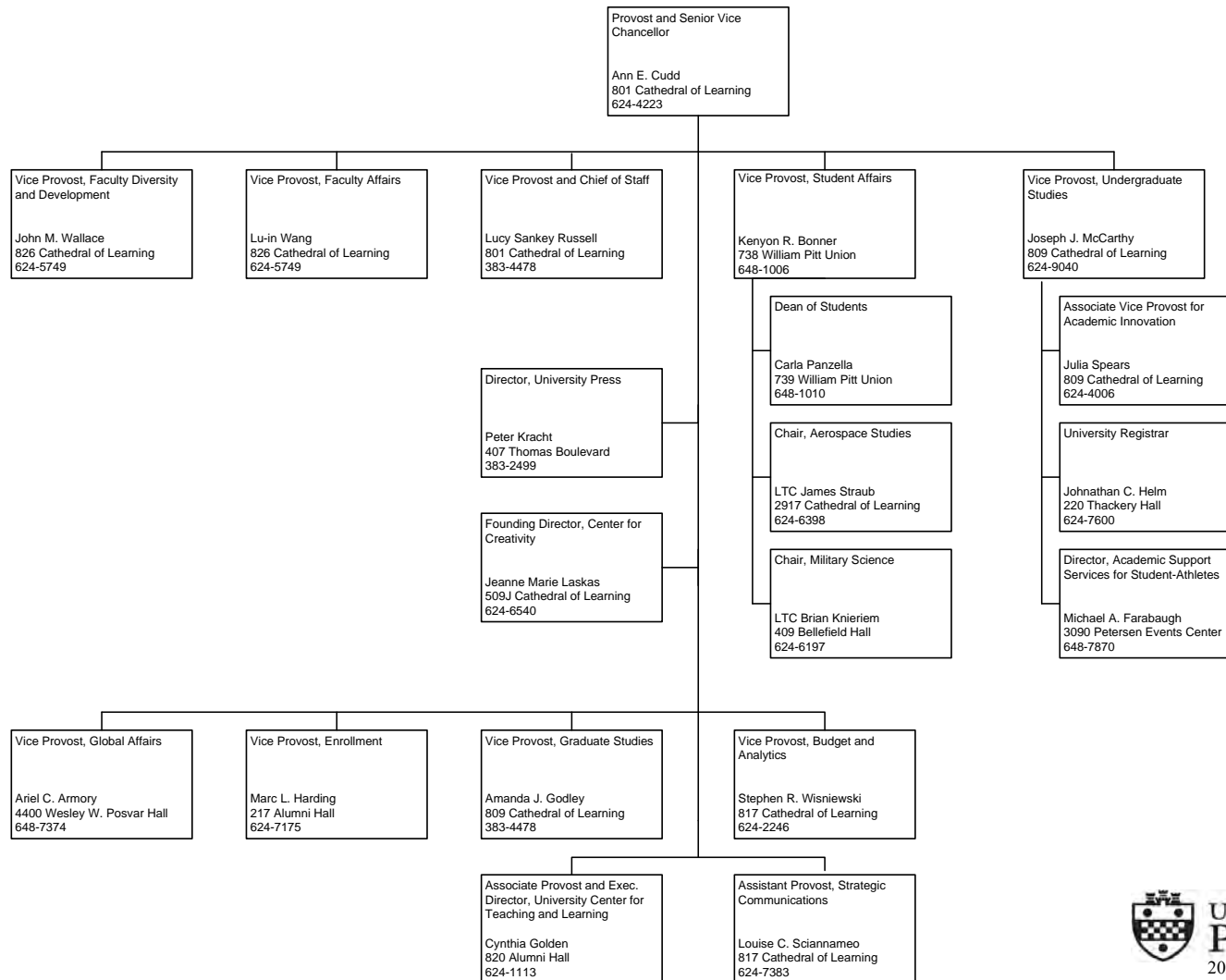


Note: All telephone numbers are in the 412 area code unless indicated otherwise.

**PROVOST AND SENIOR VICE CHANCELLOR – DEANS / DIRECTORS / PRESIDENTS**


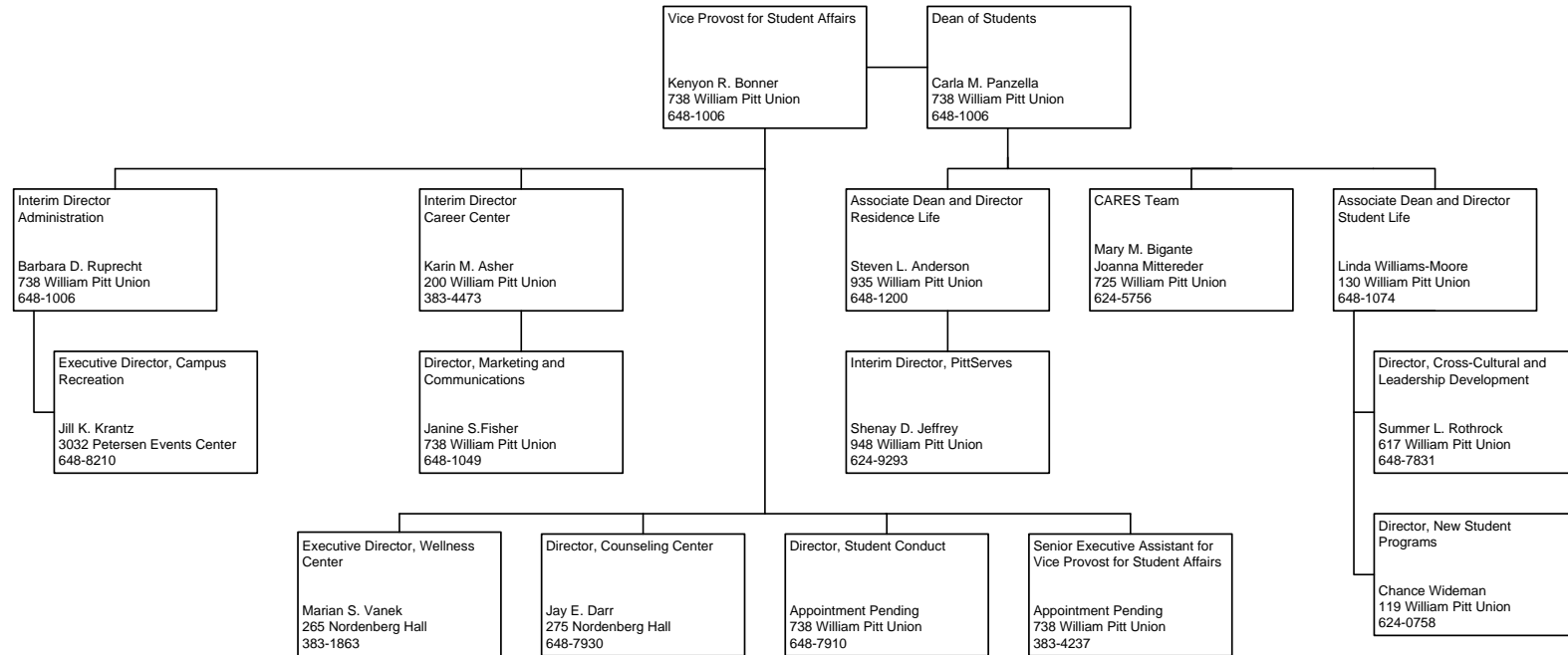
Note: All telephone numbers are in the 412 area code unless indicated otherwise.

**PROVOST AND SENIOR VICE CHANCELLOR – OTHER ACADEMIC AREAS**



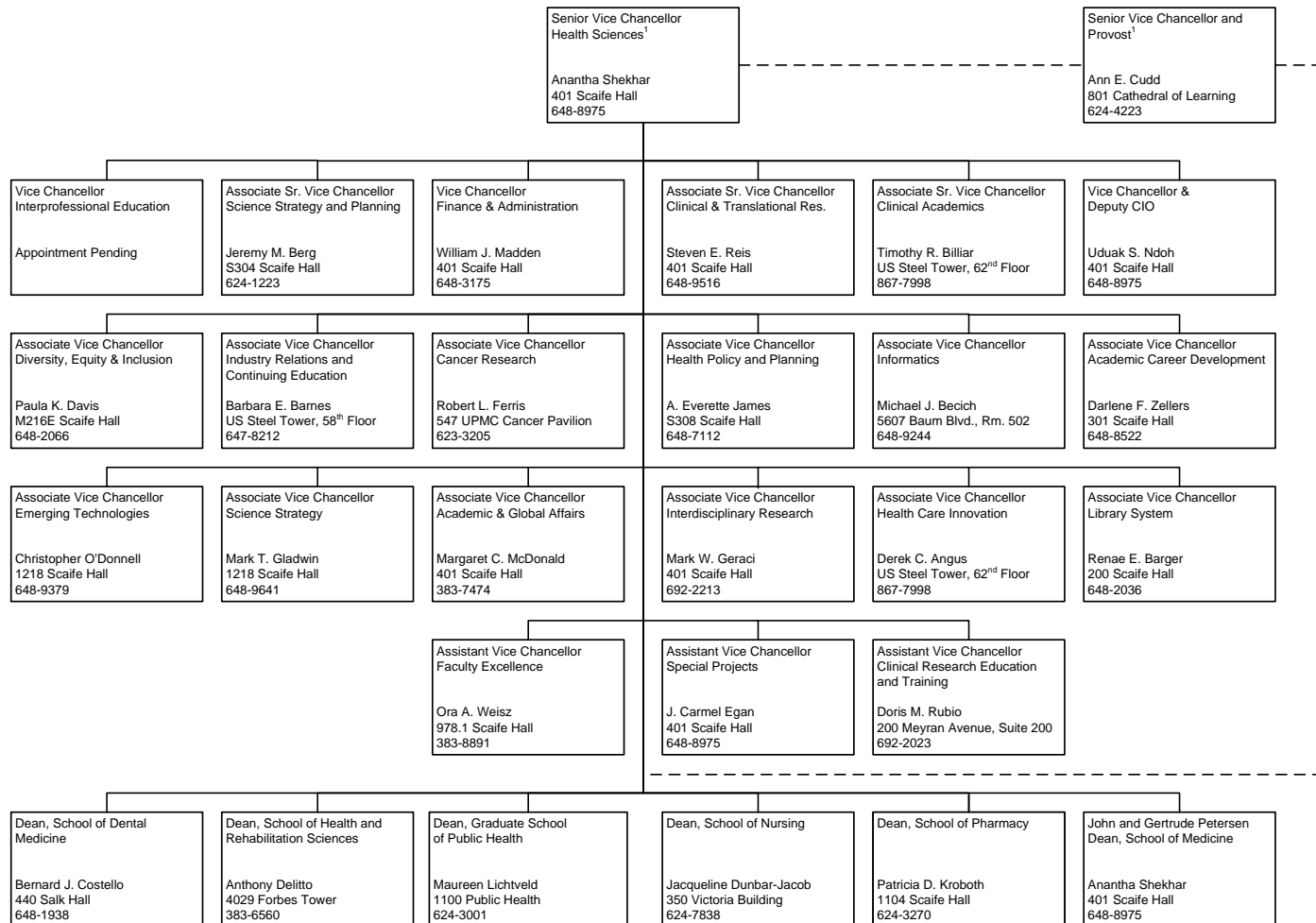
Note: All telephone numbers are in the 412 area code unless indicated otherwise.

**VICE PROVOST FOR STUDENT AFFAIRS**



Note: All telephone numbers are in the 412 area code unless indicated otherwise.

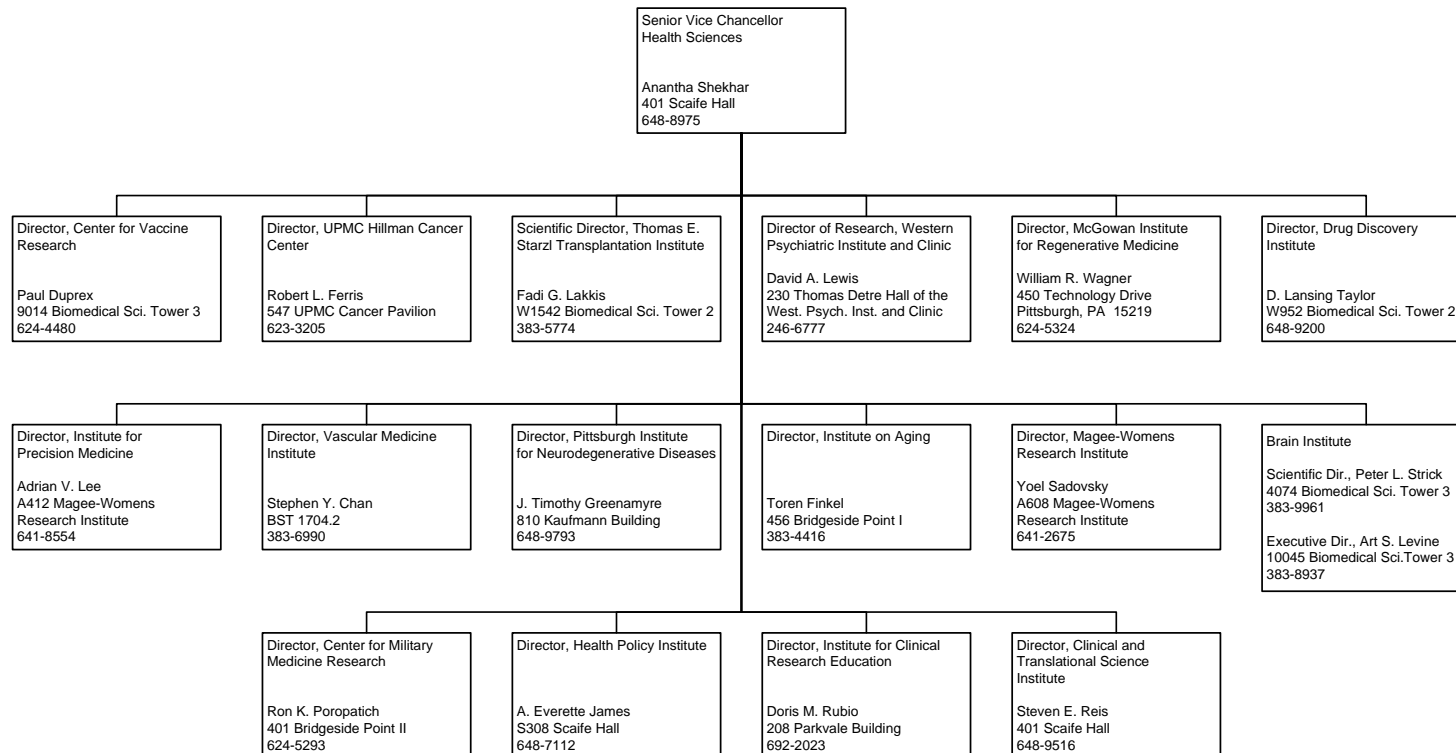
**SENIOR VICE CHANCELLOR FOR HEALTH SCIENCES – DEANS AND VICE CHANCELLORS**



<sup>1</sup>Faculty appointments and academic degree programs require the Provost's approval.

Note: All telephone numbers are in the 412 area code unless indicated otherwise.

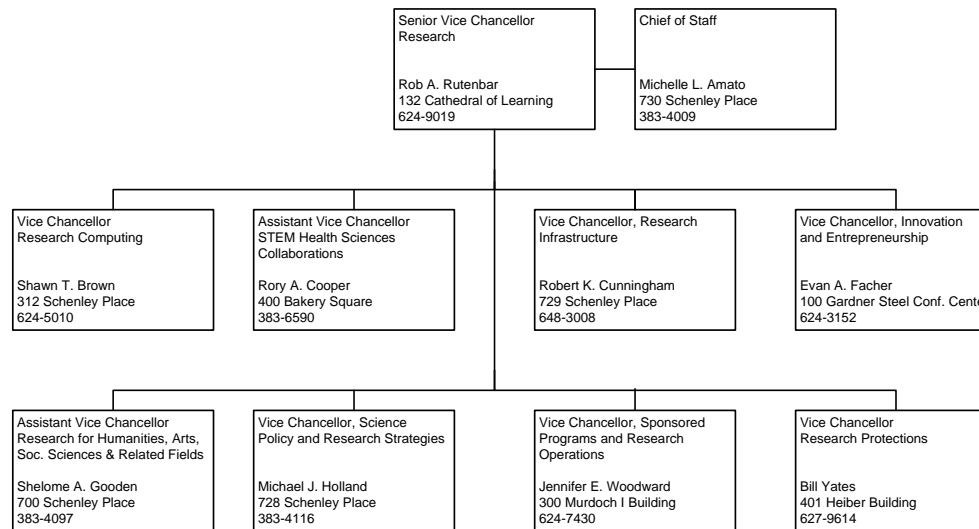
**SENIOR VICE CHANCELLOR FOR HEALTH SCIENCES – INSTITUTE DIRECTORS**



Note: All telephone numbers are in the 412 area code unless indicated otherwise.

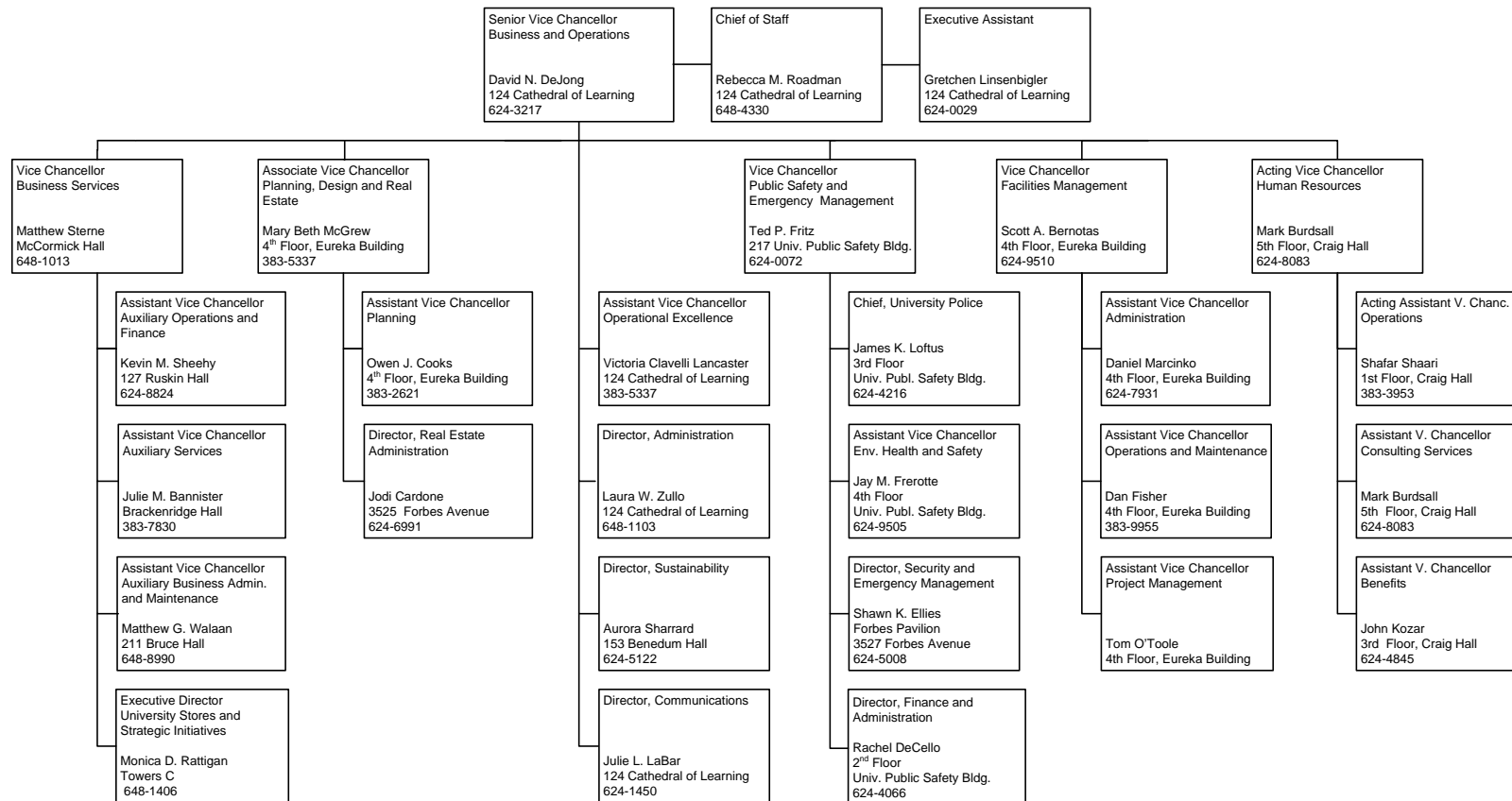


### SENIOR VICE CHANCELLOR FOR RESEARCH



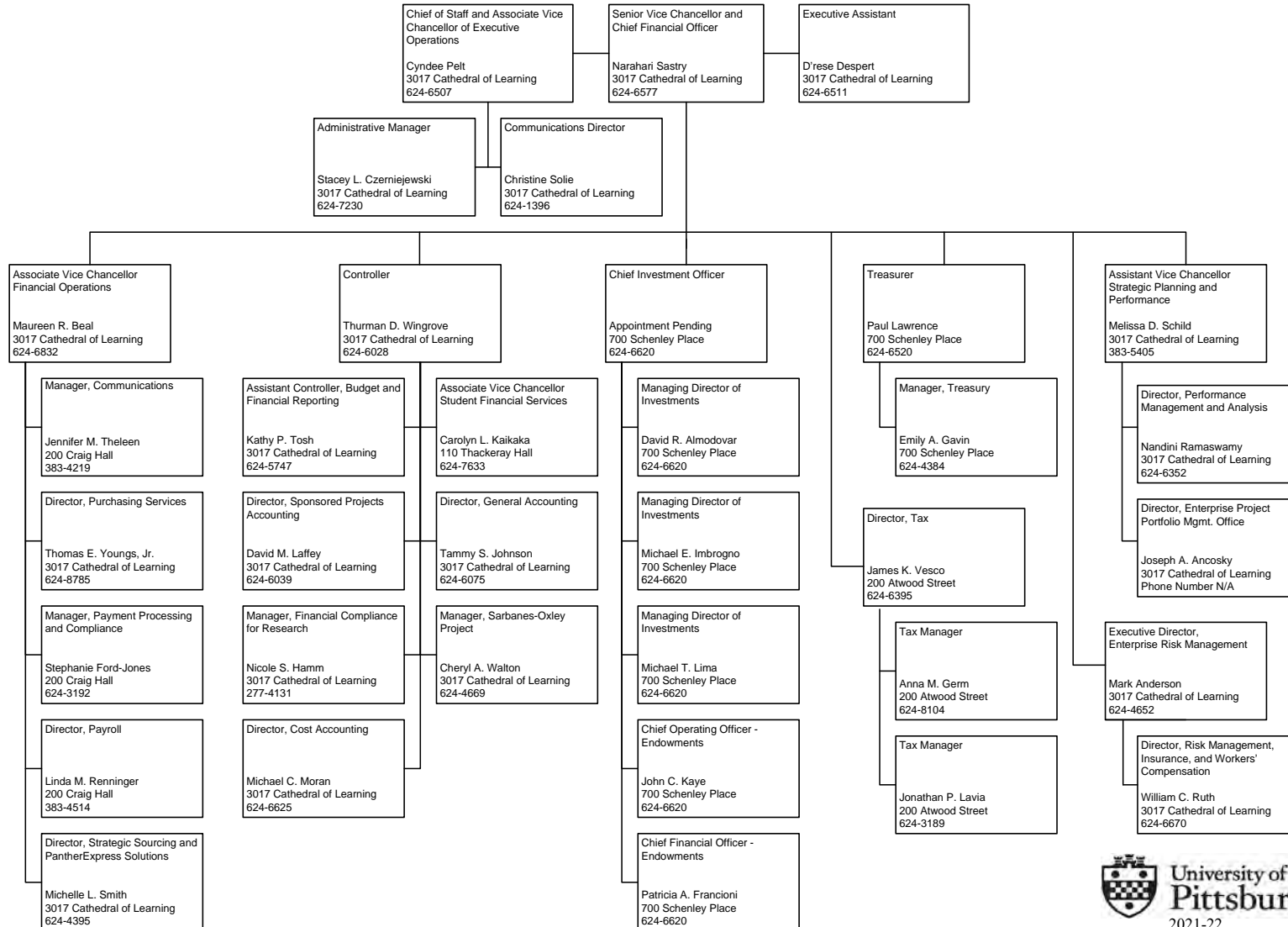
Note: All telephone numbers are in the 412 area code unless indicated otherwise.

**SENIOR VICE CHANCELLOR FOR BUSINESS AND OPERATIONS**

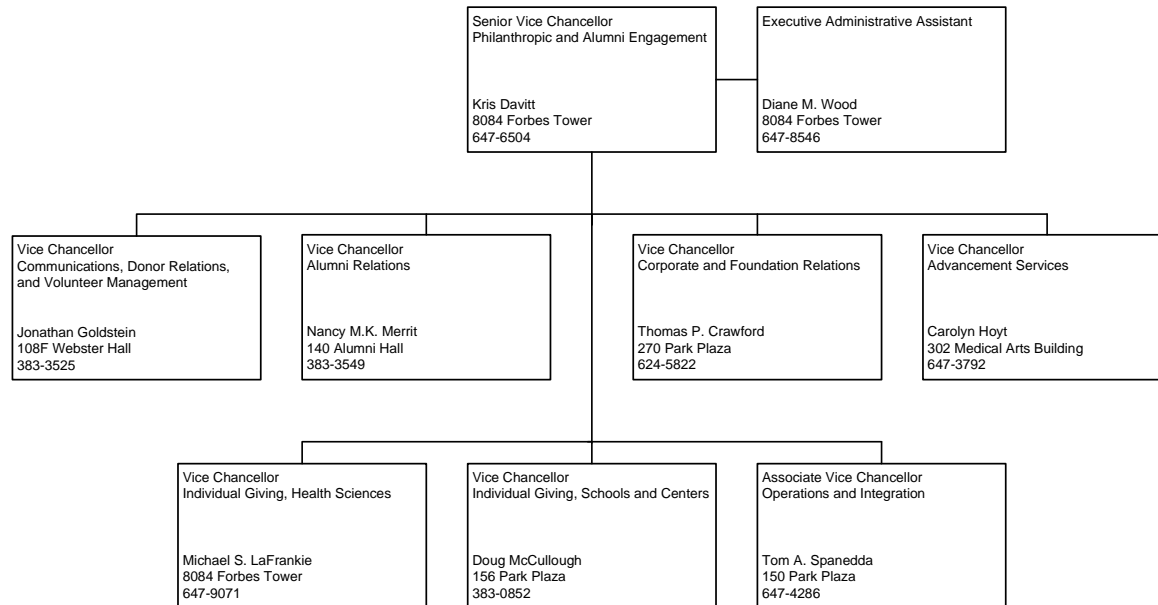


Note: All telephone numbers are in the 412 area code unless indicated otherwise.

**SENIOR VICE CHANCELLOR AND CHIEF FINANCIAL OFFICER**



### SENIOR VICE CHANCELLOR FOR PHILANTHROPIC AND ALUMNI ENGAGEMENT



Note: All telephone numbers are in the 412 area code unless indicated otherwise.